

# CONFIGURATION

SPRAY WALLS	
Option	Order code
<b>1 Width</b>	
1200 mm	1200
1800 mm	1800
2400 mm	1800
3000 mm	3000
<b>2 Type</b>	
Without sidewall	OPW
With sidewall	OPB
With sidewall and working table	TPB
<b>3 Filter stage 1</b>	
Steel shutter	N
Paper folded filter	PF
<b>4 Filter stage 2</b>	
Fabric filter	FF
<b>5 Filter stage 3</b>	
Filter mat with mesh backing	FM
<b>6 Filter stage 4</b>	
Active carbon filter	ACF
None	N
<b>7 Illumination</b>	
Ex-Proof Lamp	LA
None	N
<b>8 Control unit</b>	
Control unit for Zone 2	CUZ2
Control unit for Zone 1	CUZ1
<b>9 Standby mode</b>	
Yes floor mounted	FM
Yes wall mounted	WM
None	N
<b>10 Maintenance unit</b>	
Yes	Y
None	N
<b>11 Approval</b>	
CE	CE
UL	UL

Note: Please see webshop to find out compatible variants.



» OPW

» 2x OPW

» TPB

» TPB - carbon coal filter



LEADING IN PRODUCTION EFFICIENCY



LEADING IN PRODUCTION EFFICIENCY

## Dürr – Leading in Production Efficiency

Five divisions, one goal: maximum production efficiency for our customers

- » **Paint and Final Assembly Systems:** paint shops and final assembly systems for the automotive industry
- » **Application Technology:** robot technologies for the automatic application of paint as well as sealants and adhesives
- » **Measuring and Process Systems:** balancing and cleaning systems as well as assembly, testing and filling technology
- » **Clean Technology Systems:** exhaust-air purification systems and energy-efficiency technology
- » **Woodworking Machinery and Systems:** machinery and systems for the woodworking industry

## PAINTING WALLS & BOOTHS WITH DRY FILTRATION SYSTEM FOR LIQUID PAINT COATING



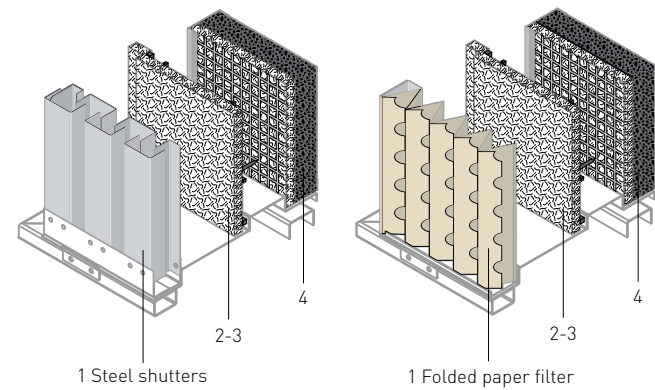
Subject to change. The information in this brochure contains only general descriptions or performance characteristics which may vary in actual cases. The requested performance parameters shall be binding only if they are explicitly agreed within the sales contract. © Dürr Systems GmbH

Dürr Systems GmbH

Carl-Benz-Strasse 34  
74321 Bietigheim-Bissingen  
Deutschland  
Tel. +49 7142 78-0  
E-Mail industrial.products@durr.com

# DRY FILTRATION SYSTEM

## FILTER LEVEL OPTIONS



### Highlights

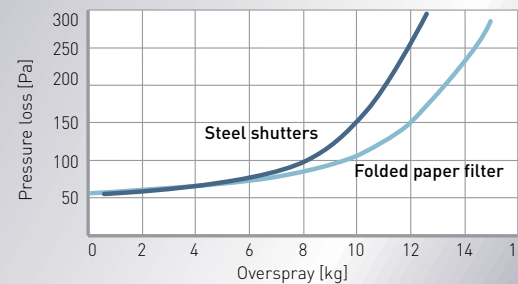
- » Solid and liquid particles efficiency of over 99%
- » Replacing the filters in front of the wall/box

\* This filter is used when annual VOC consumption is higher than 600kg. Filters are plugged in the form of cartridge from side of the wall or booth

### Graph of absorption capacity of steel shutters and folded paper filter

#### Conditions of measurement

- » filtration area of 1 m<sup>2</sup>
- » testing material acrylate paint Zinorex S2211
- » filter levels I. to III.



## Level I. Filtration – Variants compare

### Steel shutters

- » Tin louver (made of zinc plated steel or stainless steel)
- » Higher requirements on maintenance (higher costs of personnel time, longer time of production interruptions)
- » Usage of removable varnish is recommended (easier cleaning)
- » Unlimited lifetime
- » Lower efficiency

### Folded paper filter

- » Simple and efficient paper filter
- » Easy and quick change
- » Lower costs of personnel time
- » Polluted filters are disposed
- » Minimum wasted time during operation
- » Higher efficiency

# PAINTING WALLS & BOOTHS



» Open painting wall



» Open painting booth



» Table painting booth

## OPEN PAINTING WALL (OPW)

### Highlights

- » Open work area for spraying of large subjects
- » Gauge of clogged filter
- » Optional standby mode (floor mounted only)

## OPEN PAINTING BOOTH (OPB)

### Highlights

- » Open work area for spraying of large subjects
- » Illumination of working area [ATEX]
- » Gauge of clogged filter
- » Optional standby mode (floor or side wall mounted)

## TABLE PAINTING BOOTH (TPB)

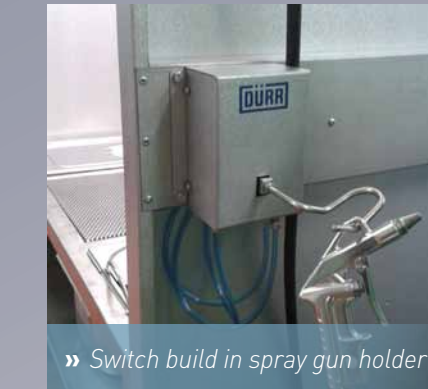
### Highlights

- » Table work area for spraying of smaller subjects
- » Illumination of working area [ATEX]
- » Gauge of clogged filter
- » Optional standby mode (floor or side wall mounted)

TYPE	OPW	OPB	TPB
Work area width	1.200–3.000 mm	1.200–3.000 mm	1.200–2.400 mm
Work area height	2137 mm	2137 mm	1387 mm
Work area depth	—	1000 mm	1000 mm
Table height	—	—	750 mm
Width	1.300–3.100 mm	1.300–3.100 mm	1.300–2.500 mm
Height with fan	2.840–2.990 mm	2.840–2.990 mm	2.730–2.840 mm
Depth	850 mm	1.850 mm	2.100 mm
Amount of exhaust air	4.700–11.600 m <sup>3</sup> /h	4.700–11.600 m <sup>3</sup> /h	3.000–6.000 m <sup>3</sup> /h
Electro motor fan power	2,5–4,8 kW	2,5–4,8 kW	1,4–3,6 kW
Pressure loss min.	80 pa	80 pa	80 pa
Pressure loss max. recommended	250 pa	250 pa	250 pa
Mains voltage	110–230 VAC	110–230 VAC	110–230 VAC
Nominal Frequency	50/60 Hz	50/60 Hz	50/60 Hz
ATEX Marking	Ex II 2G	Ex II 2G	Ex II 2G

# OPTIONAL PARTS – HIGHLIGHTS

## OPERATING PRINCIPLE OF STANDBY MODE



» Switch build in spray gun holder



» Control unit for zone 2



» Control unit for zone 1

## STANDBY MODE

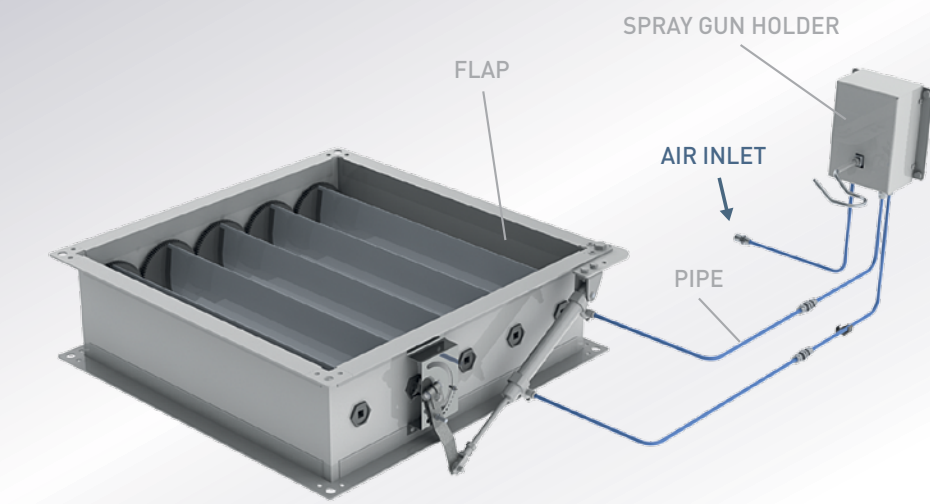
- » Reduces air flow when booth is not used.
- » Saves heat energy by reducing requirements to heat incoming air.
- » Pneumatically controlled
- » Optionally can be supplied with air flow regulator for spray gun connection.
- » Can be mounted on sidewall or as stand alone device.

## CONTROL UNIT

- » Control unit for spray wall operation
- » Main switch (on/off)
- » Fan switch (on/off)
- » Control lights – operation (white), filter clog alarm (red)
- » Can be placed according to customer needs (on booth, on wall)
- » Designed for zone 2
- » UL approved control unit

### Solution for zone 1

- Additional remote control panel
- » Designed for zone 1 environment
- » Requires standard control panel
- » Without controls only main switch available



» Operating principle of standby mode